

회/사/연/혁

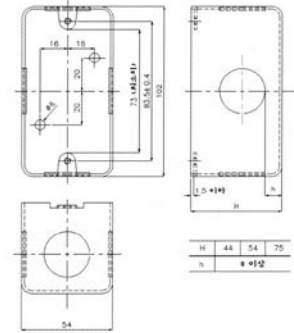


- 1972. 03. 10 大明工業社 設立. (서울시 東大門區 龍頭洞 100-1)
Dae Myung industrial Co. founded in Seoul.
- 1981. 03. 15 工場新築移轉. (京畿道 安養市 冠陽洞 951-2) Moved to new factory in An yang.
- 1982. 03. 07 韓國工業規格 ㉔ 標示許可 取得. Obtained Korean industrial standards "KS" marks.
·KSC 8458 (第3009號) SWITCH BOX, OUTLET BOX, CONCRETE BOX,
·CONCENT BOX (220V用), BOX COVER
·KSC 8460 (第3008號) SADDLE.
- 1983. 03. 28 電氣用品 製造業許可 取得.
Acquired government approval for forming meal electric goods,
- 1983. 09. 17 電氣用品 型式承認取得. (金屬製 BOX)
Gained government approval for forming meal electric boxes.
- 1984. 11. 28 中小企業 近代化實踐計劃 承認.
Admitted to government's Modernization plan for small and medium companies.
- 1984. 11. 28 有望中小企業 選定.
Designated as a promising small to medium-sized company
- 1985. 08. 20 韓國工業標準協會 會員登錄.
Registered as a member of the Korea Standard Association.
- 1985. 10. 16 UL규격 취득. (E96218) Gained UL approval (E96218)
HANDY BOX, SQUARE BOX, OCTAGON BOX, EXTENSION BOX, BOX COVER,...
- 1990. 07. 06 貿易業許可 取得. Obtained permission to engage in trade.
- 1990. 11. 30 中小企業 技術先進化業體 選定.
Designated as a target of the government's plan to help small to medium-sized businesses, to reach world-class technology.
- 1990. 12. 31 有望中小企業 卒業. "Promising small to medium-sized company" designation expires.
- 1991. 02. 01 優良中小企業體 選定. Designated as an excellent small to medium-sized company
- 1992. 03. 02 法人轉換 大明電氣株式會社 設立. Incorporated as DAE MYUNG Electric Co., Ltd.
- 1992. 11. 10 兵役特例業體 選定. Designated as a military service-exception company.
- 1995. 07. 31 城南工場 新築移轉. (京畿道 城南市 中院區 上大院洞 149-5)
Moved to new factory in Sung-Nam city.
- 1997. 02. 25 京畿道 有望中小企業體 選定.
Designated by the government of Kyong Gi province as a promising small to medium-sized company.
- 1998. 03. 03 機械類 部品 素材 品質 認證書 取得. EM마크 第98-17號
Gained EM(Excellent Machine Mechanism Material) mark.
買入 配管用 박스 固定特
- 1998. 08. 07 벤처 企業 認定 第98162531-252號
- 1999. 04. 30 韓國工業規格 ㉔ 表示許可取得. Obtained Korean industrial standards "KS" mark.
·KSC 8463 (第99-0575號) 昇降機用 BUTTON SWITCH BOX
- 2001. 09. 20 日本工業規格 表示認證書 取得 認證番號 KR0130
Obtained Japanese industrial standards "JIS" mark.
- 2003. 09. 01 企業銀行 Family 企業 指定
Designated by the Industrial Bank of Korea as a promising Family company.
- 2005. 08. 31 合成樹脂 絶緣전선(HIV)電氣安全認證 取得 第HH01047-5001A, HH01047-5002A號
Obtained Electric Appliances Safety Certificate.
- 2005. 12. 21 450/750 내열비닐絶緣전선(HIV) 韓國工業規格 ㉔ 表示許可 取得 第 05-0561號.
Obtained Korean industrial standards "KS" mark.
- 2011. 02. 17 광주공장 신축이전 (京畿道 廣州市 實村邑 釜項里 334-1番地)
Move to new factory in Gwang Ju
- 2016. 01. 01 이웅주 대표이사 취임
yongju Lee Takes office as new ceo.

스위치 박스

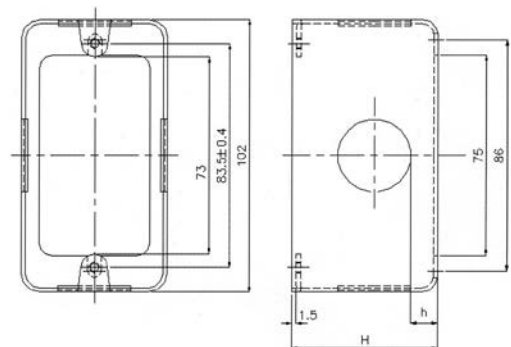
Switch Boxes for Rigid Metal Conduit

1개용 스위치 박스 (커버 없는 것) One-Switch(handy) Box (without cover)



| NO. | 높이H(mm) Height(H,mm) | 녹아웃의 종류 및 통칭 (knockouts) | | | H(mm) | 사용되는 커버 Proper Cover |
|--------|-------------------------|--------------------------|---------|-----------|-------------------|-------------------------|
| | | 통칭 Title | 옆면 side | 밑면 bottom | | |
| 101-44 | 44 | 22구 | 4×22구 | 1×16구 | 8이상 at least 8 | NO.1101 |
| | | 16구 | 4×16구 | | | |
| 101-54 | 54 | 22구 | 4×22구 | | | |
| | | 16구 | 4×16구 | | | |
| 101-75 | 75 | 22구 | 4×22구 | | | |
| | | 16구 | 4×16구 | | | |

1개용 연결형 스위치 박스 (커버 없는 것) Extension One-Switch(handy) Ring Box (without cover)

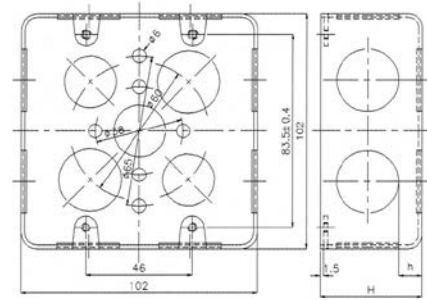
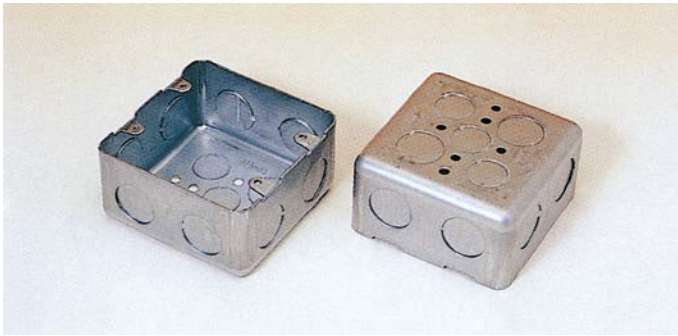


| NO. | 높이H(mm) Height(H,mm) | 녹아웃의 종류 및 통칭 (knockouts) | | | H(mm) | 사용되는 커버 Proper Cover |
|---------|-------------------------|--------------------------|---------|-----------|-------------------|-------------------------|
| | | 통칭 Title | 옆면 side | 밑면 bottom | | |
| 101-300 | 30 | - | - | Open | 8이상 at least 8 | NO.1101 |
| 101-440 | 44 | 22구 | 4×22구 | | | |
| 101-540 | 54 | 22구 | 4×22구 | | | |
| 101-750 | 75 | 22구 | 4×22구 | | | |

스위치 박스

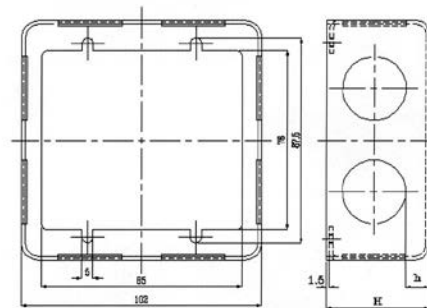
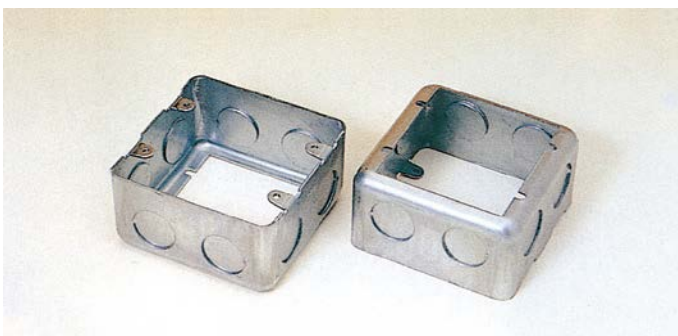
Switch Boxes for Rigid Metal Conduit

2개용 스위치 박스 (커버 없는 것) Two-Switch(Square) Box (without cover)



| NO. | 높이H(mm) Height(H,mm) | 녹아웃의 종류 및 통칭 (knockouts) | | | H(mm) | 사용되는 커버 Proper Cover |
|--------|-------------------------|--------------------------|--------------|----------------|-------------------|---|
| | | 통칭 Title | 옆면 side | 밑면 bottom | | |
| 102-44 | 44 | 22구 | 8×22구 | 3×16구 2×22구 | 8이상 at least 8 | NO.1201 NO.1202 NO.1203 NO.1204 NO.1205 |
| | | 16구 | 4×22구, 4×16구 | | | |
| | | 3구 | 12×22구 | | | |
| | | 못구멍 | 8×22구 | - | | |
| 102-54 | 54 | 22구 | 8×22구 | 3×16구 2×22구 | 8이상 at least 8 | NO.1201 NO.1202 NO.1203 NO.1204 NO.1205 |
| | | 16구 | 4×22구, 4×16구 | | | |
| | | 3구 | 12×22구 | | | |
| | | 못구멍 | 8×22구 | - | | |
| 102-75 | 75 | 22구 | 8×22구 | 3×16구 2×22구 | 8이상 at least 8 | NO.1201 NO.1202 NO.1203 NO.1204 NO.1205 |
| | | 16구 | 4×22구, 4×16구 | | | |
| | | 3구 | 12×22구 | | | |

2개용 연결형 스위치 박스 (커버 없는 것) Extension Two-Switch(Square) Box (without cover)

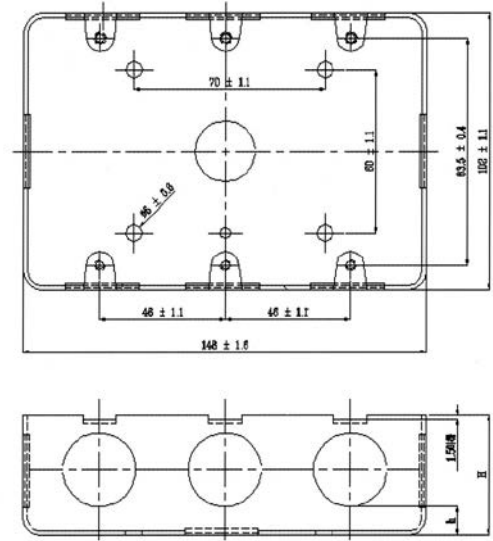
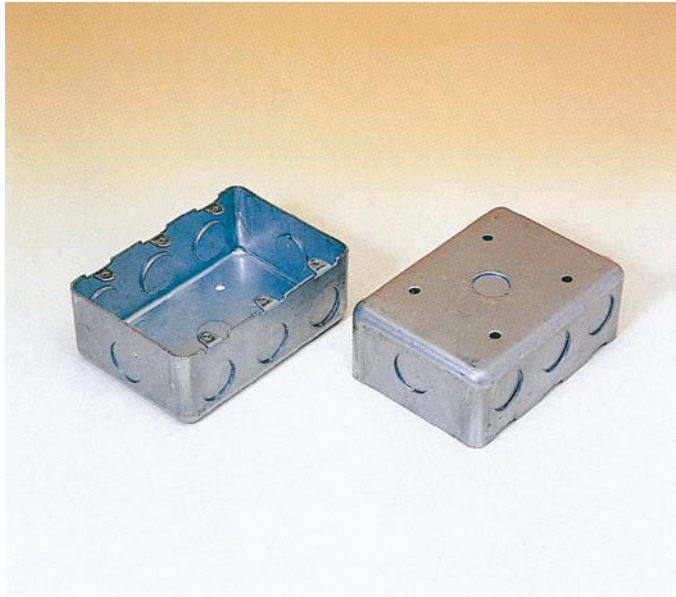


| NO. | 높이H(mm) Height(H,mm) | 녹아웃의 종류 및 통칭 (knockouts) | | | H(mm) | 사용되는 커버 Proper Cover |
|---------|-------------------------|--------------------------|---------|-----------|-------------------|---|
| | | 통칭 Title | 옆면 side | 밑면 bottom | | |
| 102-440 | 44 | 22구 | 8×22구 | Open | 8이상 at least 8 | NO.1201 NO.1202 NO.1203 NO.1204 NO.1205 |
| 102-540 | 54 | 22구 | 8×22구 | | | |
| 102-750 | 75 | 22구 | 8×22구 | | | |

스위치 박스

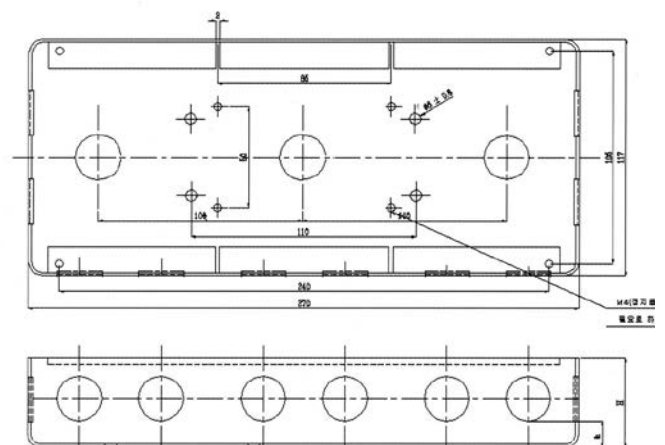
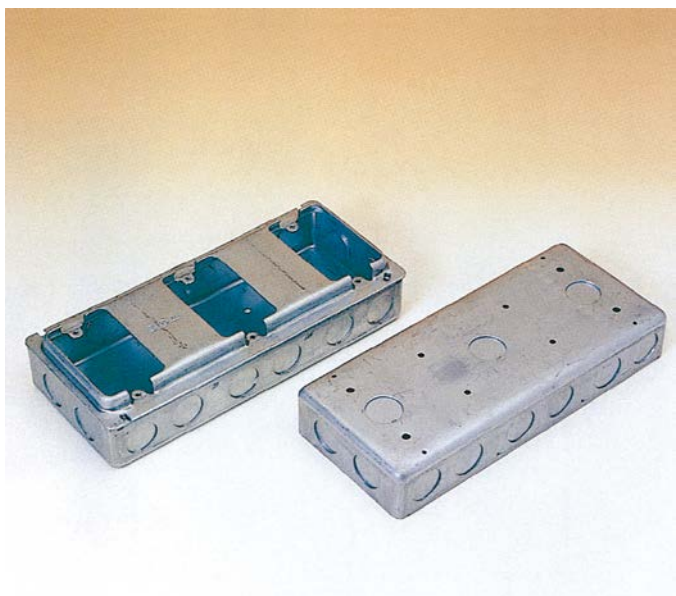
Switch Boxes for Rigid Metal Conduit

3개용 스위치 박스 (커버 없는 것) Three-Switch Box (without cover)



| NO. | 높이H(mm) Height(H,mm) | 녹아웃의 종류 및 통칭 (knockouts) | | | H(mm) | 사용되는 커버 Proper Cover |
|--------|-------------------------|--------------------------|---------|-----------|-------------------|-------------------------|
| | | 통칭 Title | 옆면 side | 밑면 bottom | | |
| 103-54 | 54 | 22구 | 8×22구 | 1×16구 | 8이상 at least 8 | |

3개용 스위치 박스 (커버 있는 것) Three-Switch Box (with cover)

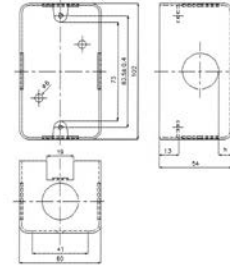
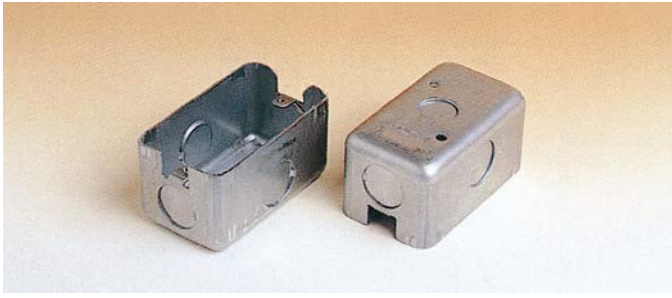


| NO. | 높이H(mm) Height(H,mm) | 녹아웃의 종류 및 통칭 (knockouts) | | | H(mm) | 사용되는 커버 Proper Cover |
|--------|-------------------------|--------------------------|---------|-----------|-------------------|-------------------------|
| | | 통칭 Title | 옆면 side | 밑면 bottom | | |
| 103-44 | 44 | 22구 | 16×22구 | 3×16구 | 8이상 at least 8 | |

콘센트 박스

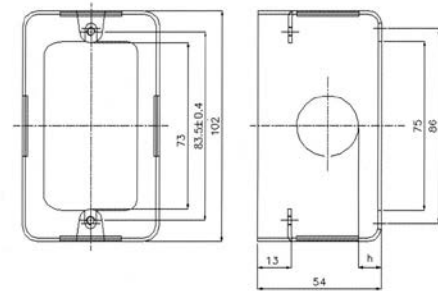
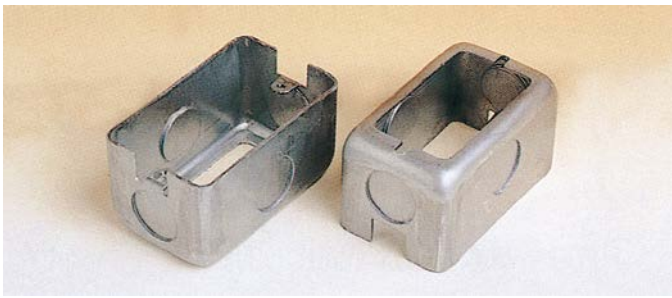
Switch Boxes for Rigid Metal Conduit

1개용 콘센트 박스 (커버 없는 것) One-Switch(handy) Box for 220V (without cover)



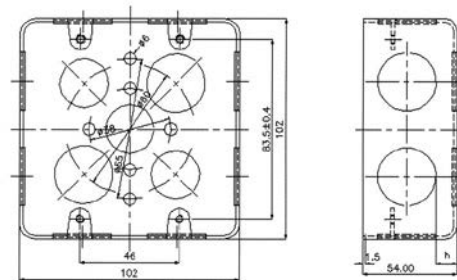
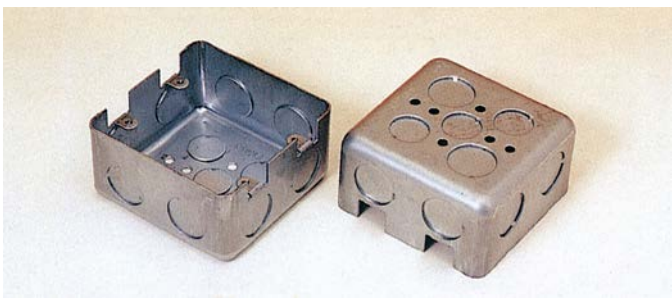
| NO. | 높이H(mm) Height(H,mm) | 녹아웃의 종류 및 통칭 (knockouts) | | | H(mm) | 사용되는 커버 Proper Cover |
|---------|-------------------------|--------------------------|---------|-----------|-------------------|-------------------------|
| | | 통칭 Title | 옆면 side | 밑면 bottom | | |
| 1041-54 | 54 | 22구 | 4×22구 | 1×16구 | 8이상 at least 8 | |
| | | 16구 | 4×16구 | | | |
| 1041-75 | 75 | 22구 | 4×22구 | | | |

1개용 연결형 콘센트 박스 (커버 없는 것) Extension One-Switch(handy) Box for 220V (without cover)



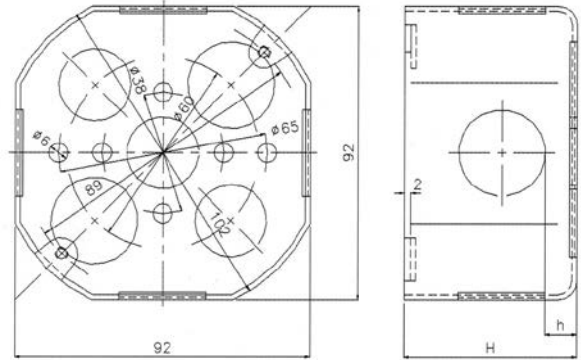
| NO. | 높이H(mm) Height(H,mm) | 녹아웃의 종류 및 통칭 (knockouts) | | | H(mm) | 사용되는 커버 Proper Cover |
|----------|-------------------------|--------------------------|---------|-----------|------------------|-------------------------|
| | | 통칭 Title | 옆면 side | 밑면 bottom | | |
| 1041-540 | 54 | 22구 | 4×22구 | Open | 80이상, at least 8 | |
| 1041-750 | 75 | 22구 | 4×22구 | | | |

2개용 콘센트 박스 (커버 없는 것) Two-Switch(Square) Box for 220V (without cover)



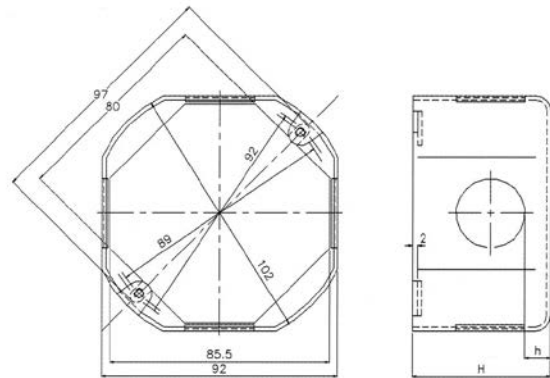
| NO. | 높이H(mm) Height(H,mm) | 녹아웃의 종류 및 통칭 (knockouts) | | | H(mm) | 사용되는 커버 Proper Cover |
|---------|-------------------------|--------------------------|---------|--------------|------------------|-------------------------|
| | | 통칭 Title | 옆면 side | 밑면 bottom | | |
| 1042-54 | 54 | 22구 | 8×22구 | 3×16구, 2×22구 | 80이상, at least 8 | |
| 1042-75 | 75 | | | | | |

8각 아우트렛 박스 Octagonal Outlet Box



| NO. | 높이H(mm) Height(H,mm) | 녹아웃의 종류 및 통칭 (knockouts) | | | H(mm) | 사용되는 커버 Proper Cover |
|--------|-------------------------|--------------------------|--------------|-----------|-------------------|-------------------------|
| | | 통칭 Title | 옆면 side | 밑면 bottom | | |
| 301-44 | 44 | 22구 | 4×22구 | 3×16구 | 8이상 at least 8 | NO.1301 NO.1302 |
| | | 16구 | 2×22구, 2×16구 | 2×22구 | | |
| | | 못구멍 | 4×22구 | - | | |
| 304-54 | 54 | 22구 | 4×22구 | 3×16구 | 8이상 at least 8 | NO.1301 NO.1302 |
| | | 16구 | 2×22구, 2×16구 | 2×22구 | | |
| | | 못구멍 | 4×22구 | - | | |
| 301-75 | 75 | 22구 | 4×22구 | 3×16구 | 8이상 at least 8 | NO.1301 NO.1302 |
| | | 16구 | 2×22구, 2×16구 | 2×22구 | | |

8각 연결형 아우트렛 박스 Extension Octagonal Outlet Ring Box

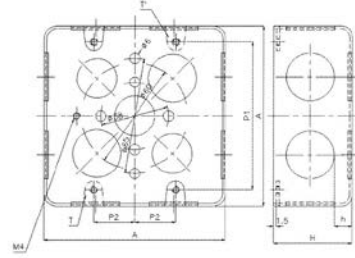
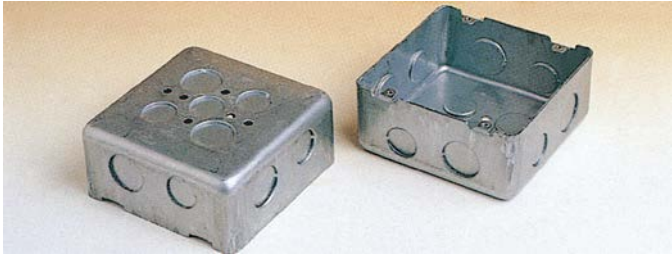


| NO. | 높이H(mm) Height(H,mm) | 녹아웃의 종류 및 통칭 (knockouts) | | | H(mm) | 사용되는 커버 Proper Cover |
|--------|-------------------------|--------------------------|---------|-----------|-------------------|-------------------------|
| | | 통칭 Title | 옆면 side | 밑면 bottom | | |
| 301-44 | 44 | 22구 | 4×22구 | Open | 8이상 at least 8 | NO.1301 NO.1302 |
| 301-54 | 54 | 22구 | 4×22구 | | | |
| 301-75 | 75 | 22구 | 4×22구 | | | |

아우트렛 박스

Outlet Boxes for Rigid Metal Conduit

대형4각 아우트렛 박스 Large Square Outlet Box

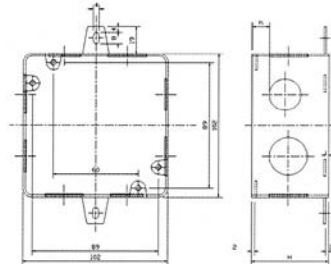


| NO. | 높이H(mm) Height(H,mm) | 녹아웃의 종류 및 통칭 (knockouts) | | | H(mm) | 사용되는 커버 Proper Cover |
|--------|-------------------------|--------------------------|--------------|--------------|------------------|-------------------------|
| | | 통칭 Title | 옆면 side | 밑면 bottom | | |
| 501-54 | 54 | 16구 | 4×22구, 4×16구 | 3×16구, 2×22구 | 80이상, at least 8 | |

콘크리트 박스

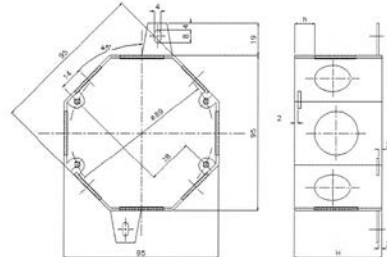
Concrete Boxes for Rigid Metal Conduit

중형4각 콘크리트 박스 Medium-sized Square Concrete Boxes



| NO. | 높이H(mm) Height(H,mm) | 녹아웃의 종류 및 통칭 (knockouts) | | | H(mm) | 사용되는 커버 Proper Cover |
|--------|-------------------------|--------------------------|--------------|-----------|---------------------|------------------------------------|
| | | 통칭 Title | 옆면 side | 밑면 bottom | | |
| 404-54 | 54 | 기본 | 4×22구, 4×16구 | Open | 12이상 at least 12 | NO.1203 NO.1204 NO.1205 NO.1206 |
| 404-75 | 75 | 기본 | 4×22구, 4×16구 | | | |

8각 콘크리트 박스 Octagonal Concrete Boxes



| NO. | 높이H(mm) Height(H,mm) | 녹아웃의 종류 및 통칭 (knockouts) | | | H(mm) | 사용되는 커버 Proper Cover |
|--------|-------------------------|--------------------------|--------------|-----------|---------------------|-------------------------|
| | | 통칭 Title | 옆면 side | 밑면 bottom | | |
| 408-54 | 54 | 기본 | 4×22구, 4×16구 | Open | 12이상 at least 12 | NO.1301 NO.1302 |
| 408-75 | 75 | 기본 | 4×22구, 4×16구 | | | |

박스 커버

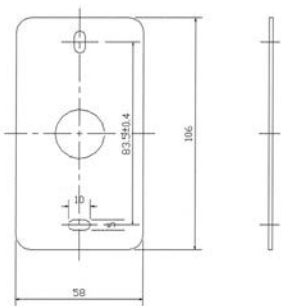
Box Covers for Rigid Metal Conduit

1개용 스위치 박스 커버 Box Cover for One-Switch(handy) Box



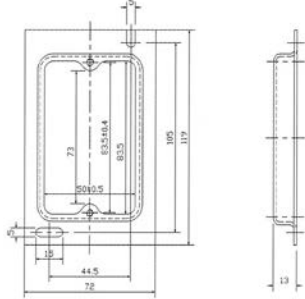
NO.1101

1개용 평커버
Flat Cover for
One Switch Box



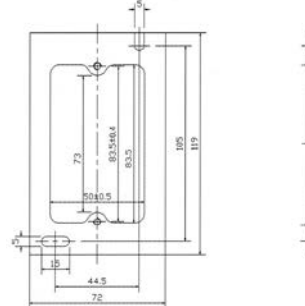
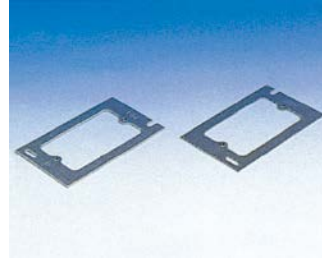
NO.1102

1개용 오목형 1개용 스위치 커버
Concave Cover for
One Switch Box



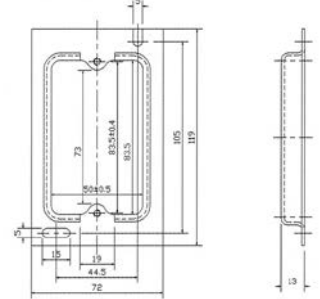
NO.1103

1개용 평형 1개용 스위치 커버
Flat Cover for
One Switch Box



NO.1104

1개용 오목형 콘센트 커버
Concave Cover for
One Switch Box

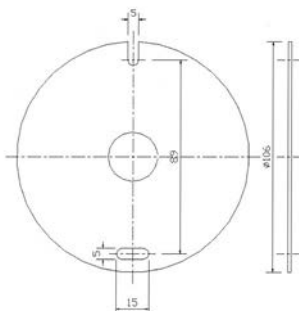
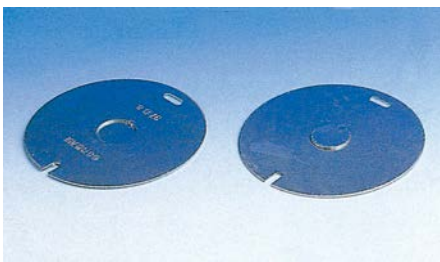


8각 아우트렛 박스 커버 Box Cover for Octagonal Outlet

NO.1301

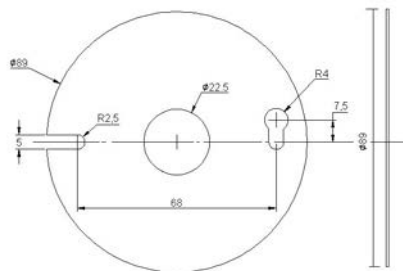


8각 평커버
Octagonal Flat Cover



NO.1301-1

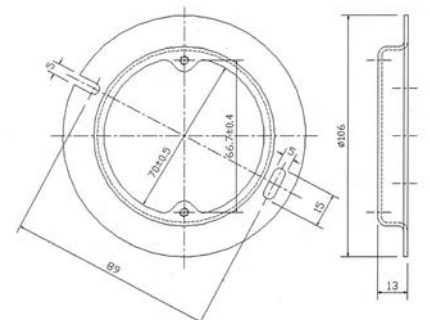
8각 평커버(소형)
Octagonal Flat Cover(Small Size)



NO.1302



8각 오목형 둥근 구멍 커버
Octagonal Concave Cover
with Round Hole



박스 커버

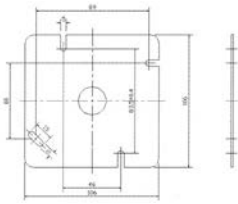
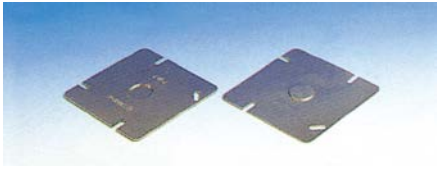
Box Covers for Rigid Metal Conduit

2개용 스위치 박스 커버 Box Cover for Two-Switch(Square) Box



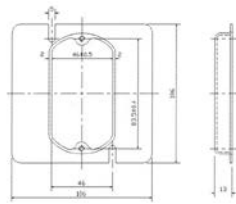
NO.1201

2개용 평커버
Flat Cover for
Two Switch Box



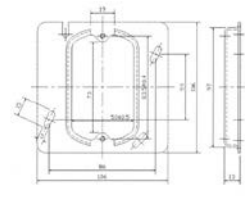
NO.1202

2개용 오목형 1개용 스위치 커버
Concave Cover for
Two Switch Box



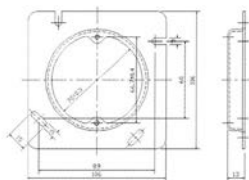
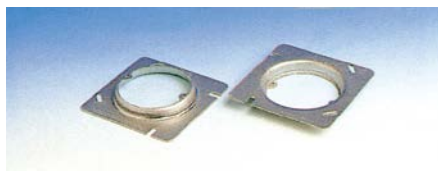
NO.1203

2개용 오목형 콘센트 커버
Concave Cover for
Two Switch Box



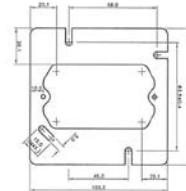
NO.1204

중형4각 오목형 둥근 구멍 커버
Medium-sized Concave Two Switch Box
cover with Round Hole



NO.1205

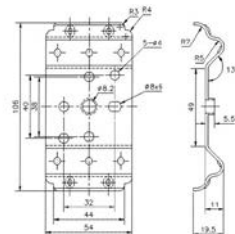
중형4각 평형 1개용 스위치 커버
Medium-sized Flat Two Switch Box
cover for One Switch



박스 고정장치(보강철물)

Holding Frame Switch Box

스위치 박스 고정장치 Holding Frame Switch Box

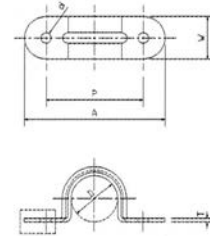


| NO. | 소재 Materials | 두께 Thickness | 조립방법 How to Fix |
|--------|--|---------------------------|-----------------------------|
| Z00001 | 용융아연도금 강판 Steel Plate Coated with Molten Zinc | 1,6mm이상 at least 1,6mm | 4.8mm 리벳 use 4,8mm rivet |

새 들

Saddles for Rigid Metal Conduit

조임새들 Saddle



| 종 류 Item | 새들의 호칭 Name of Saddle | 주요부의 치수 | | Size of main Pars | | | 단위(Unit):mm | |
|--|--------------------------|---------|-----|-------------------|------|-----|-------------|-----|
| | | P | A | W | D | d | T | t |
| 후강 전선관용 새들 Tightening Saddle for Cable Pipe | 반쪽 조임 새들 Half | 16 | 45 | 20 | 21.5 | 5.5 | 1.6 | 2.3 |
| | | 22 | 55 | | 27 | | | |
| | | 28 | 65 | 25 | 33.5 | | | |
| | | 36 | 75 | | 42 | | | |
| | | 42 | 85 | | 48 | | | |
| | 양쪽조임 새들 Both-Side | 54 | 100 | 30 | 60 | 6.5 | | 3.2 |
| | | 70 | 120 | | 75.5 | | | |
| | | 82 | 135 | 35 | 88.5 | | | |
| | | 92 | 150 | | 102 | | | |
| | | 104 | 170 | | 115 | | | |

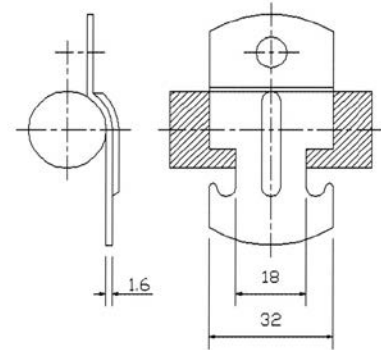
비고 : •는 한쪽조임 새들의 두께이다.(한쪽조임 새들의 휨강도를 높이기 위한 보강부분을 설치하고, 보강부분은 두께의 50% 이상일 것)
• 나사없는 전선관에도 공용한다.

Note : t means thickness of one-side tightening saddled, (To heighten the elasticity, reinforcing part must be at least 50% as thick as the saddled.) Also applicable to screwless cable pipe.

클램프

Clamps

클램프 Clamp



| 채널용 클램프의 호칭 Name of Clamp | 주요부의 치수 | | Size of main Pars | | 단위(Unit):mm | | |
|------------------------------|---------|--------|-------------------|-----|-------------|-----|-----|
| | A | B | C | L1 | L2 | T | |
| 16 | 18±0.5 | 32±0.5 | φ7±0.5 | 34 | 10 | 1.6 | |
| 22 | | | | 39 | | | |
| 28 | | | | 46 | | | |
| 36 | | | | 56 | | | |
| 42 | | | | 61 | | | |
| 54 | | | | 75 | | | |
| 70 | | | | 94 | | | |
| 82 | | | | 104 | | | |
| 104 | | | | 134 | | | 2.3 |